

Kawasaki Robotics

Mar. 2024

Kawasaki Heavy Industries, Ltd.
Robot Business Division

 **Kawasaki**
Powering your potential

カワる、
サキへ。

Changing forward

Section 1

Outline of Kawasaki Heavy Industries, Ltd.

Company Outline

Kawasaki Heavy Industries, Ltd.

(Consolidated figures as of March 31, 2023)

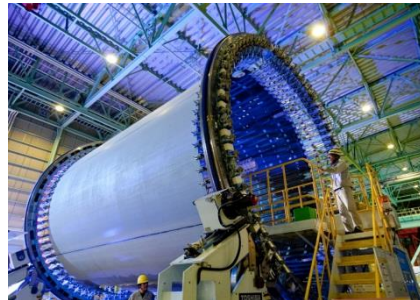
Established	1896
Annual Sales	US\$ 12,922 million
Number of Employees	38,254
Headquarters	Kobe and Tokyo, Japan



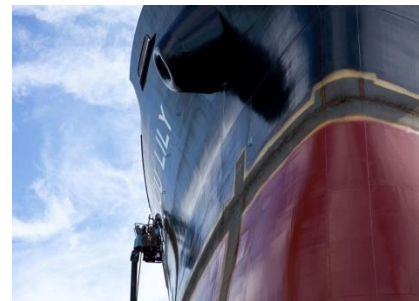
Tokyo HQ



Kobe HQ



One Kawasaki Land. Sea. Air. Worldwide



Section 2

Robotics Business Overview

Kawasaki produced Japan's first industrial robot in 1969. Based on the technologies acquired over half a century, we are moving forward from an industrial robot manufacturer to a "**Fully-Integrated Robot Manufacturer**" and offer solutions to various social problems.

Product Lineup



Wafer transfer
N & T series



Medical &
pharmaceutical
MC & MS series
(4-5 kg)



Pick & Place
Y series
(2-3 kg)



Dual-arm
Collaborative
duAro (4-6 kg)



Arc welding
BA series
(6-20 kg)



Small-to-medium
R series
(3-80 kg)



Painting
K series
(5-15 kg)



Palletizing
CP series
(80-700 kg)



Large
Z series
(100-300kg)



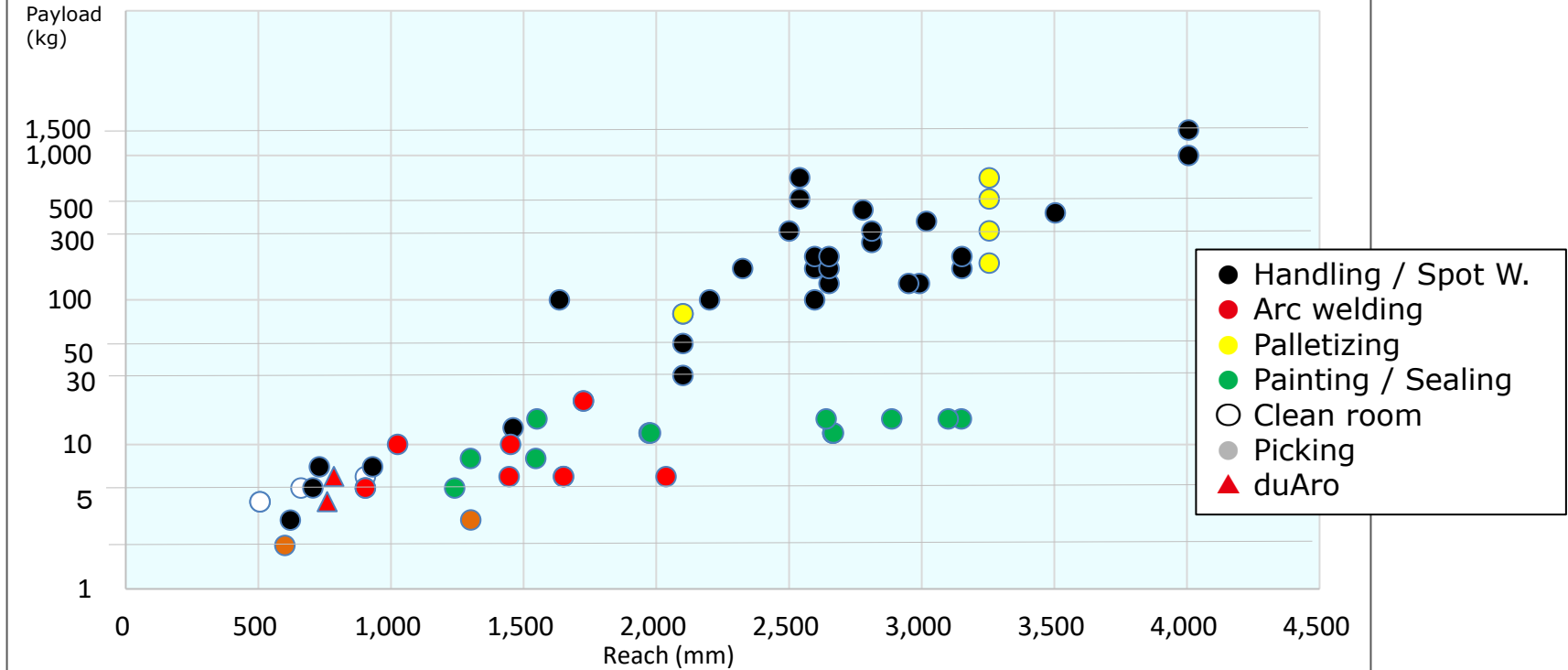
Large
BX & BXP series
(100-300 kg)



Extra large
M series
(360-1500 kg)

Kawasaki Robots Lineup

Wide range of robots for all applications

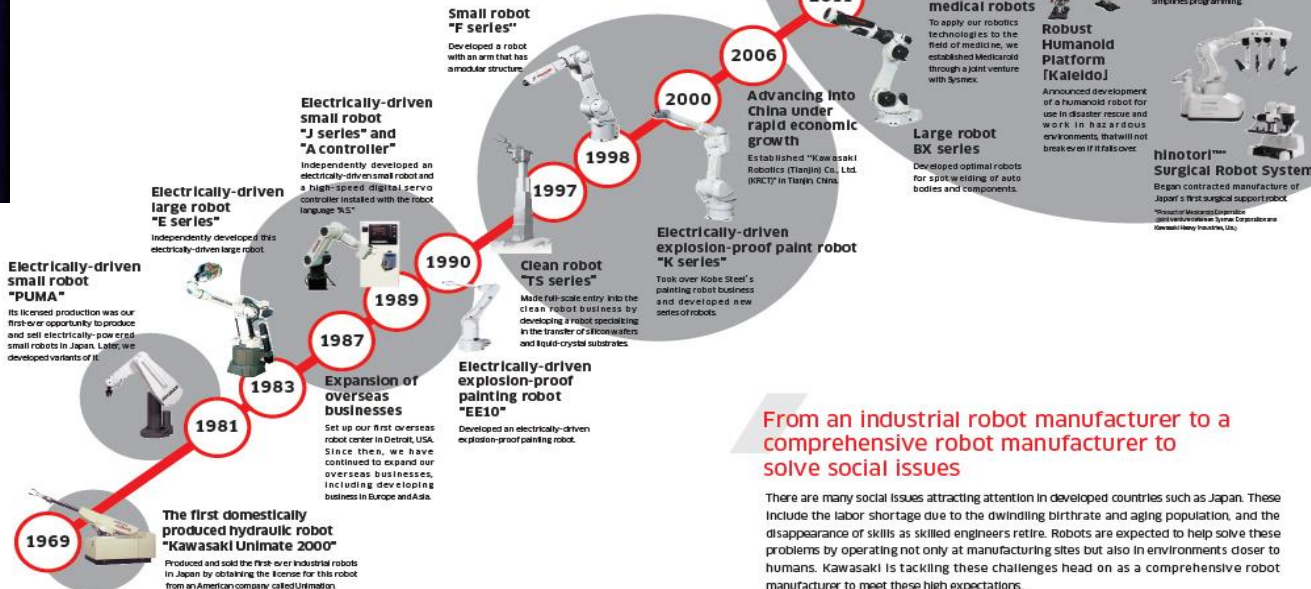


Brief History of Kawasaki Robotics



The history of industrial robots in Japan, which stretches back more than half-a-century long, began with Kawasaki Heavy Industries.

In May, 1969, Kawasaki Heavy Industries succeeded in producing Japan's first-ever industrial robot, the first generation of the "Kawasaki Unimate 2000". Since then, Kawasaki Heavy Industries has been one of Japanese industry's major drivers of promoting automation of production processes, and has contributed to the evolution of Japan's world-renowned "Monozukuri" (manufacturing).



From an industrial robot manufacturer to a comprehensive robot manufacturer to solve social issues

There are many social issues attracting attention in developed countries such as Japan. These include the labor shortage due to the dwindling birthrate and aging population, and the disappearance of skills as skilled engineers retire. Robots are expected to help solve these problems by operating not only at manufacturing sites but also in environments closer to humans. Kawasaki is tackling these challenges head on as a comprehensive robot manufacturer to meet these high expectations.

Worldwide Robot Sales

Kawasaki Heavy Industries, Ltd.

(as of June30, 2023)



Number of units
(cumulative)

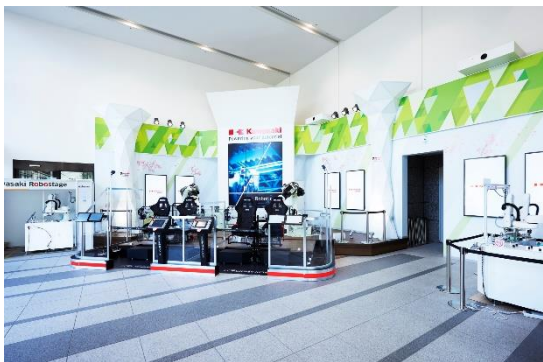
Japan	88,367
China	51,634
Asia/Oceania	61,077
Americas	58,002
Europe/Africa	29,264

➤ **Worldwide Total Sales** **288,344**

Section 3

Worldwide Operations and Global Network

Showroom **Kawasaki Robostage** (Daiba, Tokyo)



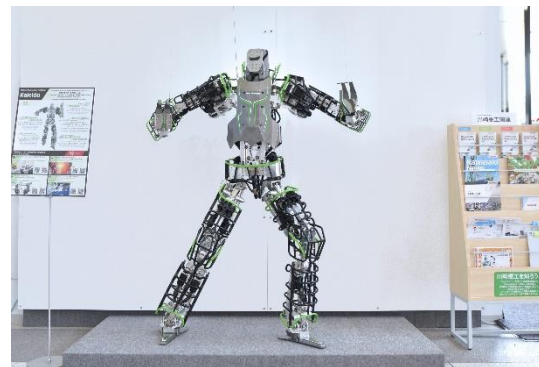
Showroom inside



External view and entrance



Attraction using VR and robots "Roboride"



Humanoid robot "Kakeido"

Future Lab HANEDA (Haneda, Tokyo)



Future Lab HANEDA



Open innovation R&D facility YouComeLab



Robot restaurant AI-SCAPE



Cooking robot in AI-SCAPE

Robot Showroom (Nishi-Kobe Works)



Auto Body Assembly Cell



Entrance

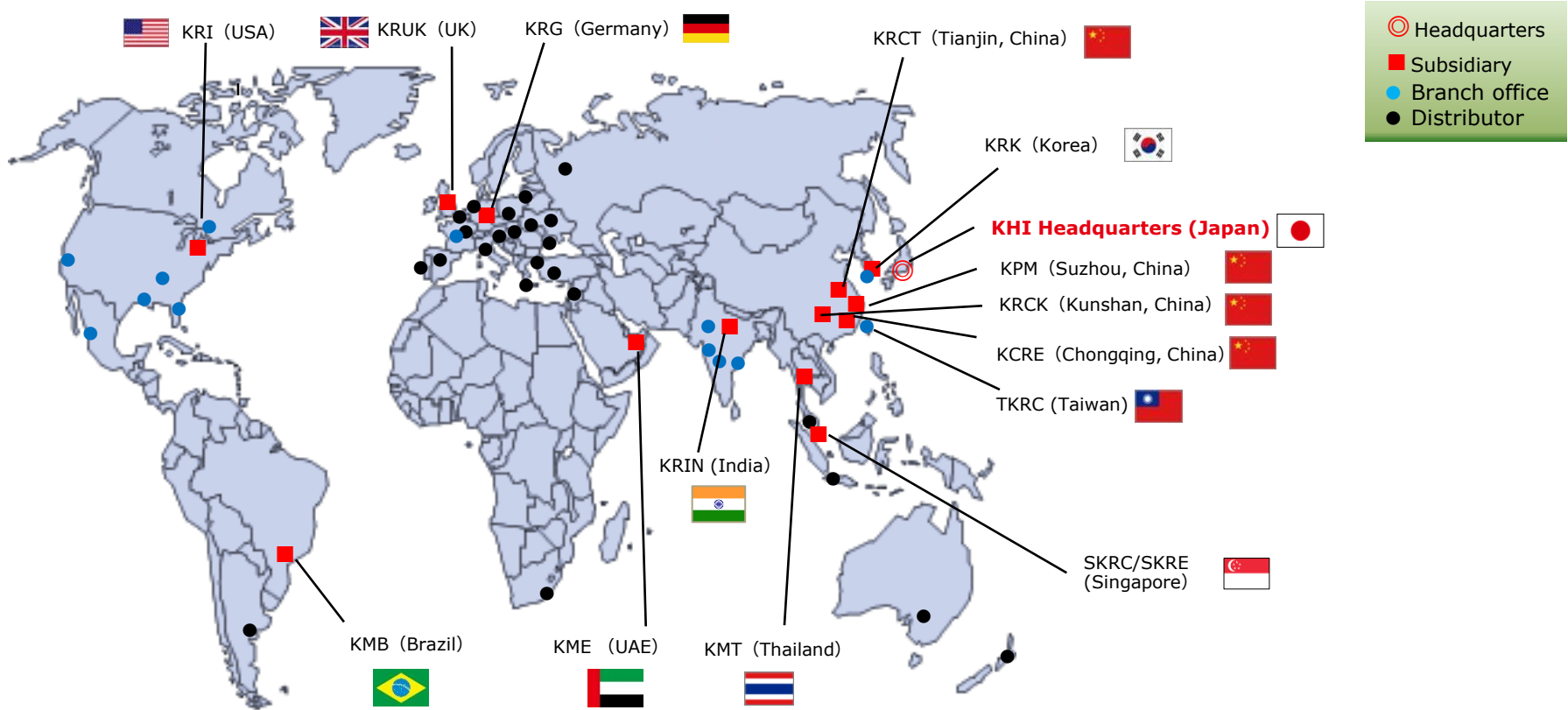


Palletizing Cell



Painting Cell

Global Robotics Business Operations



Section 4

Kawasaki Robotics Korea



회사명 한국가와사키로보틱스주식회사 (Kawasaki Robotics Korea, Ltd.)



대표이사 HADA Shinichi 신이치(秦 信一, 2020.10 ~)



설립일 1999年06月16日



자본금 15억원



종업원수 28명



소재지

(본사)

인천광역시 남동구 남동대로 215번길 43

본사 전경



Training Center



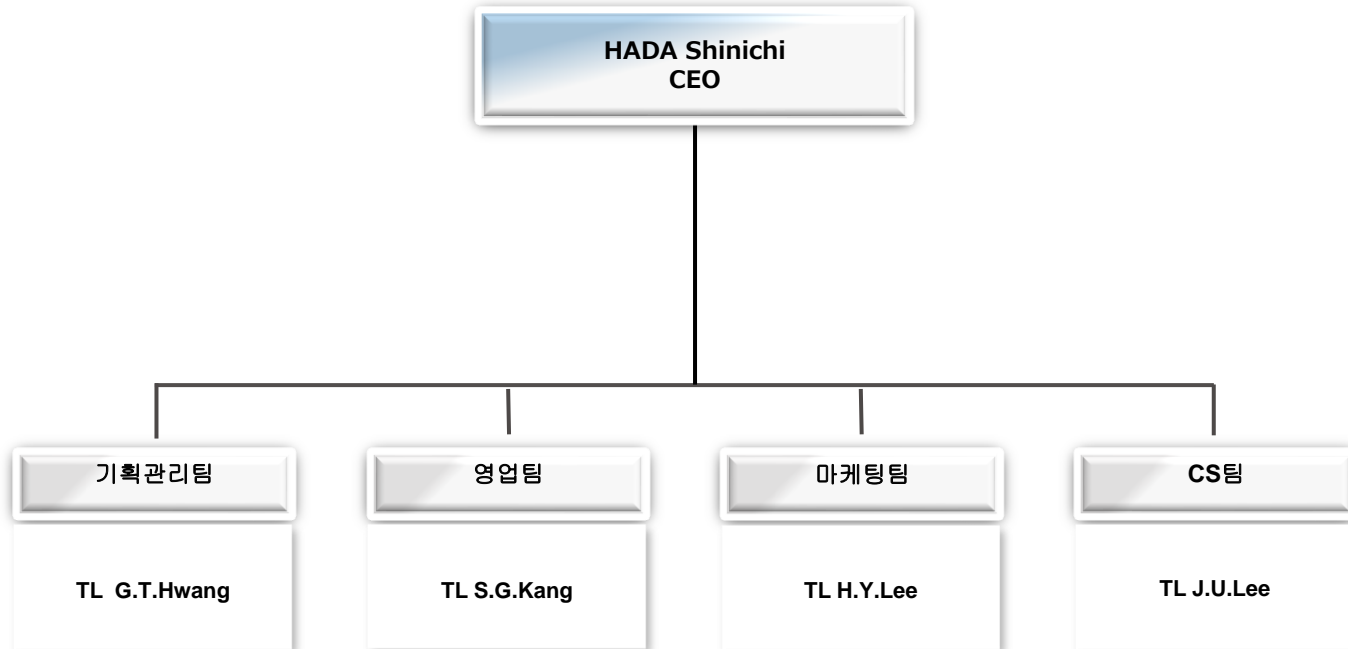
ROBOT STOCK



부품실



* Total 28명 ('24년 1월 현재)





KRK World supply - 2023年 3月

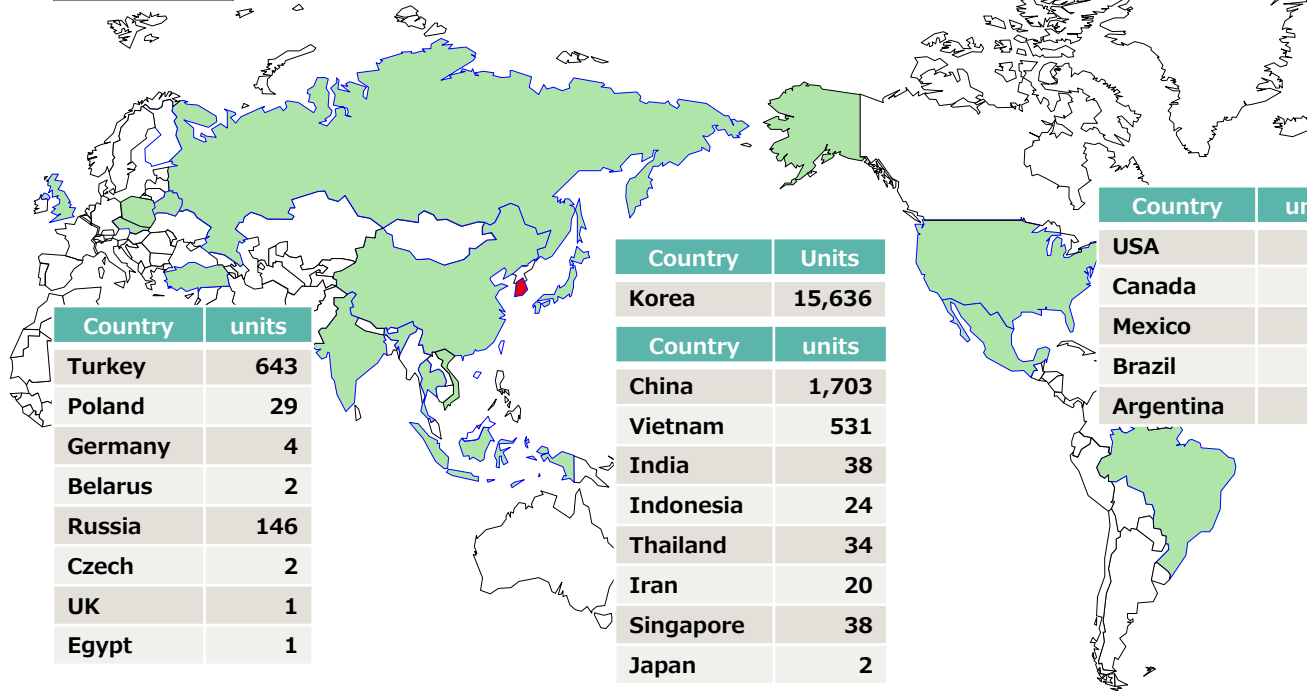


Delivered to Shaded Countries from KOREA

World Total 19,998

[汎用 : 19,669 / 半導体: 329]

-excluding transplant robots to Korea





Kawasaki
Powering your potential